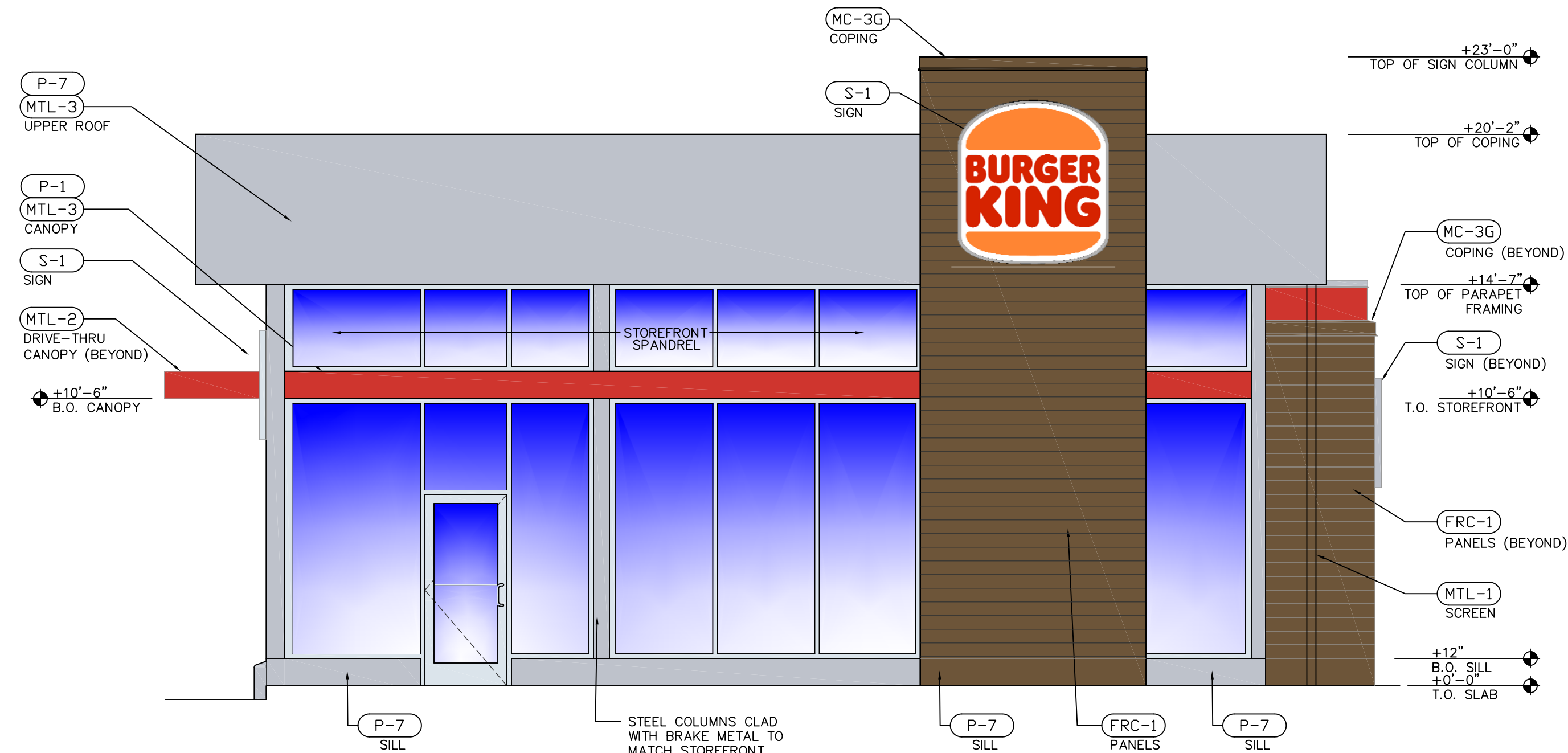


1 MAIN ENTRANCE ELEVATION
SCALE: 1/4" = 1'-0"



2 FRONT ELEVATION
SCALE: 1/4" = 1'-0"

EXTERIOR METAL		EXTERIOR GLAZING	EXTERIOR PAINT AND VINYL		EXTERIOR FACED PANELS	
<p>(MTL-1) ARCHITECTURALLY-EXPOSED ALUM. FRAMING DESCRIPTION: ALUMINUM EXTRUDED CONTACT: ENTERA BRANDING 850.763.7982 SIZE: VARIES COLOR: WOOD GRAIN FINISH: 3M VINYL SIMULATING WOOD LOCATION: HANDCRAFTED SCREENS</p> <p>(MTL-2) METAL ROOF PANELS DESCRIPTION: METAL FLAT SHEET ROOFING MANUFACTURER: BERRIDGE CONTACT: ENTERA BRANDING 850.763.7982 COLOR: RED BRAND ACCENT FINISH: TO MATCH P-1 LOCATION: DRIVE THRU CANOPY</p>	<p>(MTL-3) METAL COMPOSITE MATERIAL PANEL DESCRIPTION: COMPOSITE ALUMINUM PANELS MANUFACTURER: ALUCOBOND COLOR: ANODIC CLEAR MICA FINISH: PVDF-2 GLOSS 90 LOCATION: SILVER BAND OVERHANG</p>	<p>(GL-1) ALUMINUM-FRAMED STOREFRONT DESCRIPTION: SERIES 7000 ALUMINUM WINDOW WALL SYSTEM MANUFACTURER: GMP GLAZING - ES Windows FINISH: ANODIZED ALUMINUM, CLEAR GLAZING</p> <p>(GL-2) DRIVE THRU WINDOWS DESCRIPTION: SELF-CLOSING, SINGLE SLIDING WINDOW MANUFACTURER: READY ACCESS MODEL #275 OR QUIKSERV MODEL #SC4030</p>	<p>(P-1) PAINTING MANUFACTURER: PPG COLOR: PPG BK FLAMING RED LOCATION: RED STRIPE NOTE: EXTERIOR GREY ACCENT PAINT</p> <p>(P-2) PAINTING MANUFACTURER: PPG COLOR: PPG1021-4 DIVERSION NOTE: EXTERIOR GREY ACCENT PAINT</p> <p>(P-3) PAINTING MANUFACTURER: FARROW & BALL COLOR: MANOR HOUSE GRAY NO.265 LOCATION: BOLLARDS, TRASH AREA NOTE: EXTERIOR DARK WOOD TONE PAINT</p>	<p>(P-4) VINYL MANUFACTURER: 3M TYPE: WOOD GRAIN COLOR: WG-1222 FINISH: VINYL LOCATION: HANDCRAFTED SCREENS AND DRIVE THROUGH EQUIPMENT.</p> <p>(P-7) PAINTING MANUFACTURER: PPG COLOR: PPG6-230 LEAFING SILVER ALUM. FINISH: TEXTURED COATED METAL LOCATION: EXTERIOR SILVER BAND OVERHANG</p>	<p>(EF-1) EIFS SYSTEM DESCRIPTION: GREY EXTERIOR FINISH MANUFACTURER: STO OR APPROVED EQUAL CONTACT: P-2 FINISH: SMOOTH FINISH</p> <p>(EF-2) EIFS SYSTEM DESCRIPTION: BROWN EXTERIOR FINISH MANUFACTURER: STO OR APPROVED EQUAL CONTACT: P-3 FINISH: SMOOTH FINISH</p>	<p>(FRC-1) FIBER REINFORCED CEMENT PANELS DESCRIPTION: HERITAGE WARM TEXTURED PANELS MANUFACTURER: NICHHA CONTACT: ANDREW BRIGGS, abriggs@nichha.com, 678.654.7002 MATERIAL: VINTAGE WOOD COLOR: CEDAR EPC762F</p>

DATE:	
CHECKED BY:	REVISION
DRAWN BY:	DATE
NO.	

BURGER KING
BROADWAY RESTAURANT GROUP, INC
11854 LACKLAND ROAD
ST. LOUIS, MO 63146
CONTACT: MIKE THEIS
mike@bkr-restaurants.com
618-210-1712

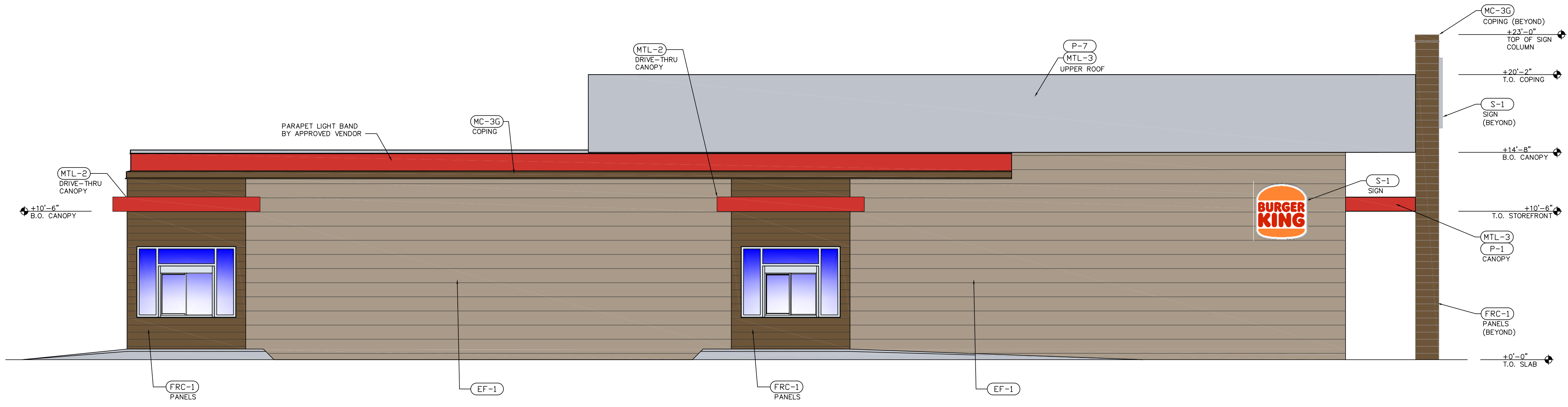
450 WEDMAN ROAD
ST. LOUIS, MISSOURI 63011
WWW.ANSWERSINC.COM
CONTACT: DANIELLE TRITT
DANIELLE@ANSWERSINC.COM

ANSWERS

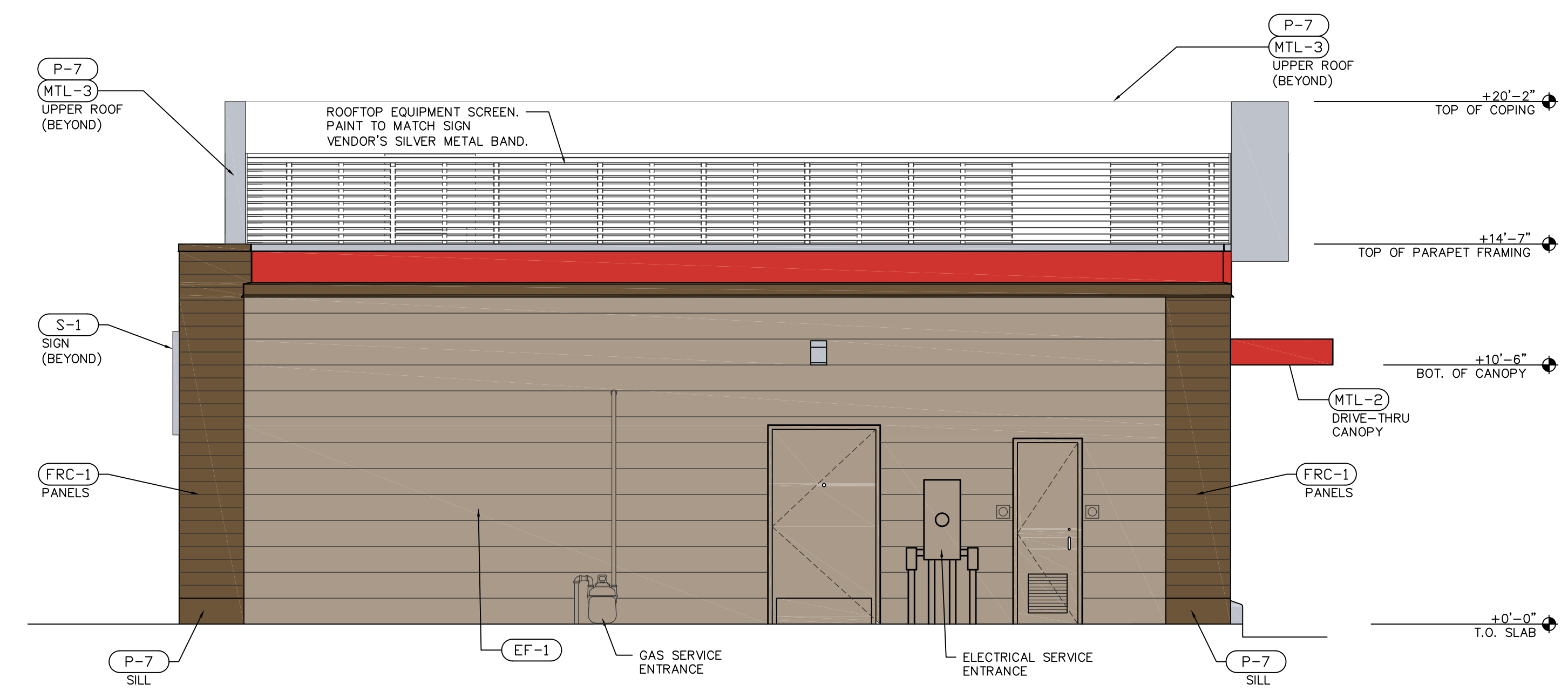
DATE: 09.03.2020

BURGER KING RESTAURANT
10734 SUNSET HILLS PLAZA
ST. LOUIS, MO 63127

EXTERIOR ELEVATIONS ALTERNATIVE




1 DRIVE THROUGH ELEVATION
SCALE: 1/4" = 1'-0"



2 REAR ELEVATION
SCALE: 1/4" = 1'-0"

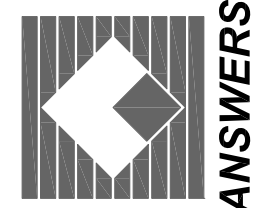
<p>EXTERIOR METAL</p> <p>(MTL-1) ARCHITECTURALLY-EXPOSED ALUM. FRAMING DESCRIPTION: ALUMINUM EXTRUDED CONTACT: ENTERA BRANDING 850.763.7982 SIZE: VARIES COLOR: WOOD GRAIN FINISH: 3M VINYL SIMULATING WOOD LOCATION: HANDCRAFTED SCREENS</p> <p>(MTL-2) METAL ROOF PANELS DESCRIPTION: METAL FLAT SHEET ROOFING MANUFACTURER: BERRIDGE CONTACT: ENTERA BRANDING 850.763.7982 COLOR: RED BRAND ACCENT FINISH: TO MATCH P-1 LOCATION: DRIVE THRU CANOPY</p>	<p>(MTL-3) METAL COMPOSITE MATERIAL PANEL DESCRIPTION: COMPOSITE ALUMINUM PANELS MANUFACTURER: ALUCOBOND COLOR: ANODIC CLEAR MICA FINISH: PVDF-2 GLOSS 90 LOCATION: SILVER BAND OVERHANG</p>	<p>EXTERIOR GLAZING</p> <p>(GL-1) ALUMINUM-FRAMED STOREFRONT DESCRIPTION: SERIES 7000 ALUMINUM WINDOW WALL SYSTEM MANUFACTURER: GMP GLAZING - ES Windows FINISH: ANODIZED ALUMINUM, CLEAR GLAZING</p> <p>(GL-2) DRIVE THRU WINDOWS DESCRIPTION: SELF-CLOSING, SINGLE SLIDING WINDOW MANUFACTURER: READY ACCESS MODEL #275 OR QUIKSERV MODEL #SC4030</p>	<p>EXTERIOR PAINT AND VINYL CONTACT: RICK GARLIN garlin@ppg.com</p> <p>(P-1) PAINTING MANUFACTURER: PPG COLOR: PPG BK FLAMING RED LOCATION: RED STRIPE NOTE: RED BRAND ACCENT PAINT</p> <p>(P-2) PAINTING MANUFACTURER: PPG COLOR: PPG1021-4 DIVERSION NOTE: EXTERIOR GREY ACCENT PAINT</p> <p>(P-3) PAINTING MANUFACTURER: FARROW & BALL COLOR: MANOR HOUSE GRAY NO.265 LOCATION: BOLLARDS, TRASH AREA NOTE: EXTERIOR DARK WOOD TONE PAINT</p>	<p>(P-4) VINYL MANUFACTURER: 3M TYPE: WOOD GRAIN COLOR: WG-1222 FINISH: VINYL LOCATION: HANDCRAFTED SCREENS AND DRIVE THROUGH EQUIPMENT.</p> <p>(P-7) PAINTING MANUFACTURER: PPG COLOR: PPG6-230 LEAFING SILVER ALUM. FINISH: TEXTURED COATED METAL LOCATION: EXTERIOR SILVER BAND OVERHANG</p>	<p>(EF-1) EIFS SYSTEM DESCRIPTION: GREY EXTERIOR FINISH MANUFACTURER: STO OR APPROVED EQUAL CONTACT: P-2 FINISH: SMOOTH FINISH</p> <p>(EF-2) EIFS SYSTEM DESCRIPTION: BROWN EXTERIOR FINISH MANUFACTURER: STO OR APPROVED EQUAL CONTACT: P-3 FINISH: SMOOTH FINISH</p>	<p>EXTERIOR FACED PANELS</p> <p>(FRC-1) FIBER REINFORCED CEMENT PANELS DESCRIPTION: HERITAGE WARM TEXTURED PANELS MANUFACTURER: NICHHA CONTACT: ANDREW BRIGGS, abriggs@nichha.com, 678.654.7002 MATERIAL: VINTAGE WOOD COLOR: CEDAR EPC762F</p>
---	---	--	---	---	--	---

DATE: _____
REVISION: _____
CHECKED BY: _____
DRAWN BY: _____
NO. DATE: _____



BROADWAY RESTAURANT GROUP, INC
11854 LACKLAND ROAD
ST. LOUIS, MO 63146
CONTACT: MIKE THIES
mike@broadway-restaurants.com
618-210-1712

450 WEDMAN ROAD
ST. LOUIS, MISSOURI 63011
WWW.ANSWERSINC.COM
CONTACT: DANIELLE TRITT
DANIELLE@ANSWERSINC.COM



ANSWERS

DATE: 09.03.2020

BURGER KING RESTAURANT
10734 SUNSET HILLS PLAZA
ST. LOUIS, MO 63127

EXTERIOR ELEVATIONS ALTERNATIVE

A-2.1