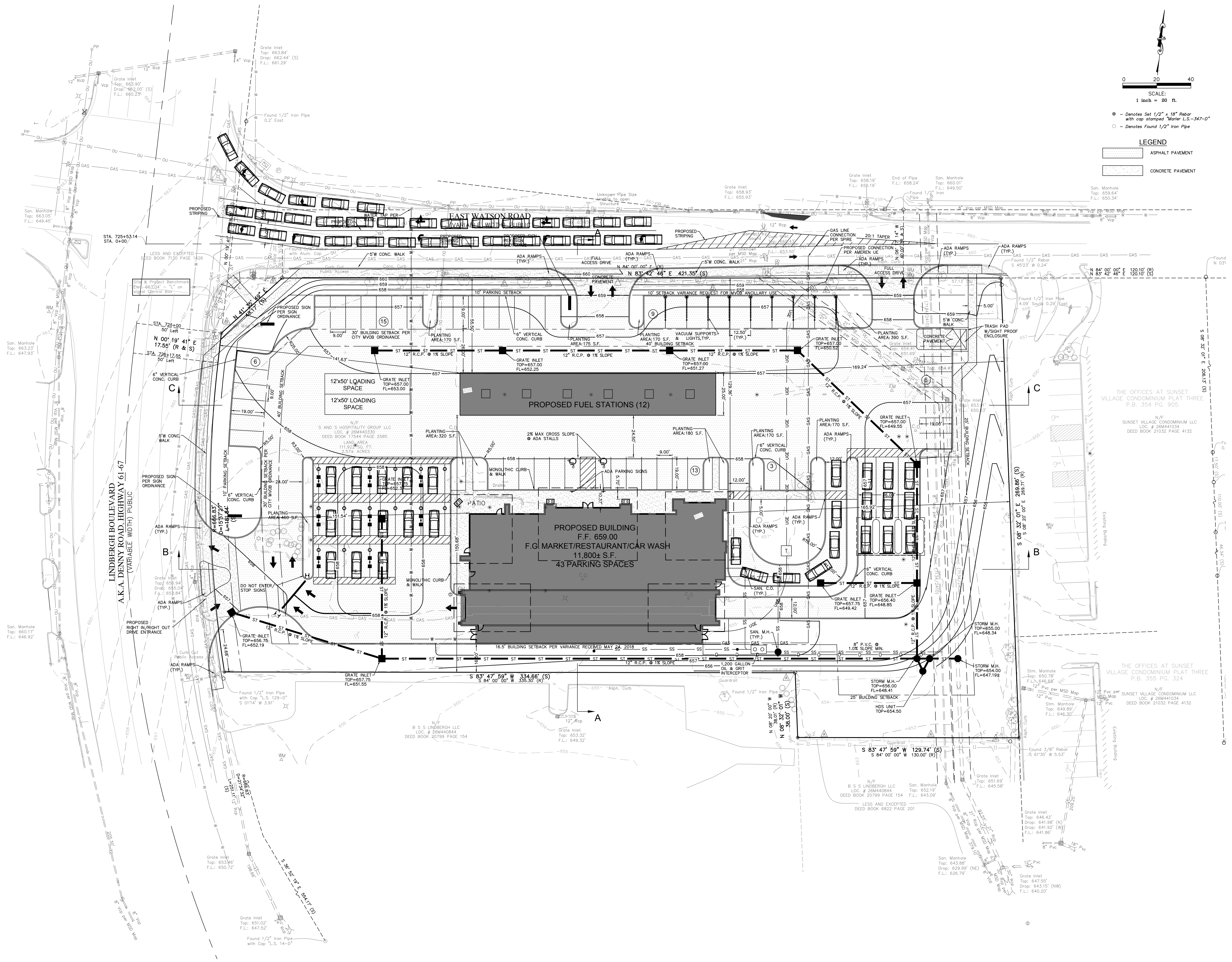


Proj. # 1801

No.	Description	Date
To City		06-07-18
To City		06-18-18
To City		06-20-18
To City		07-19-18

Amended Final Development Plan

C2



0 20 40
SCALE:
1 inch = 80 ft.

- - Denotes Set 1/2" x 18" Rebar with cap stamped "Marler L.S.-347-D"
- - Denotes Found 1/2" Iron Pipe

LEGEND

- [Hatched Box] ASPHALT PAVEMENT
- [Dotted Box] CONCRETE PAVEMENT

THE OFFICES AT SUNSET VILLAGE CONDOMINIUM PLAT THREE P.B. 354 PG. 905

N/F SUNSET VILLAGE CONDOMINIUM LLC LOC. # 20M441033 DEED BOOK 21032 PAGE 4132

THE OFFICES AT SUNSET VILLAGE CONDOMINIUM PLAT THREE P.B. 355 PG. 324

N/F SUNSET VILLAGE CONDOMINIUM LLC LOC. # 20M441038 DEED BOOK 21032 PAGE 4132