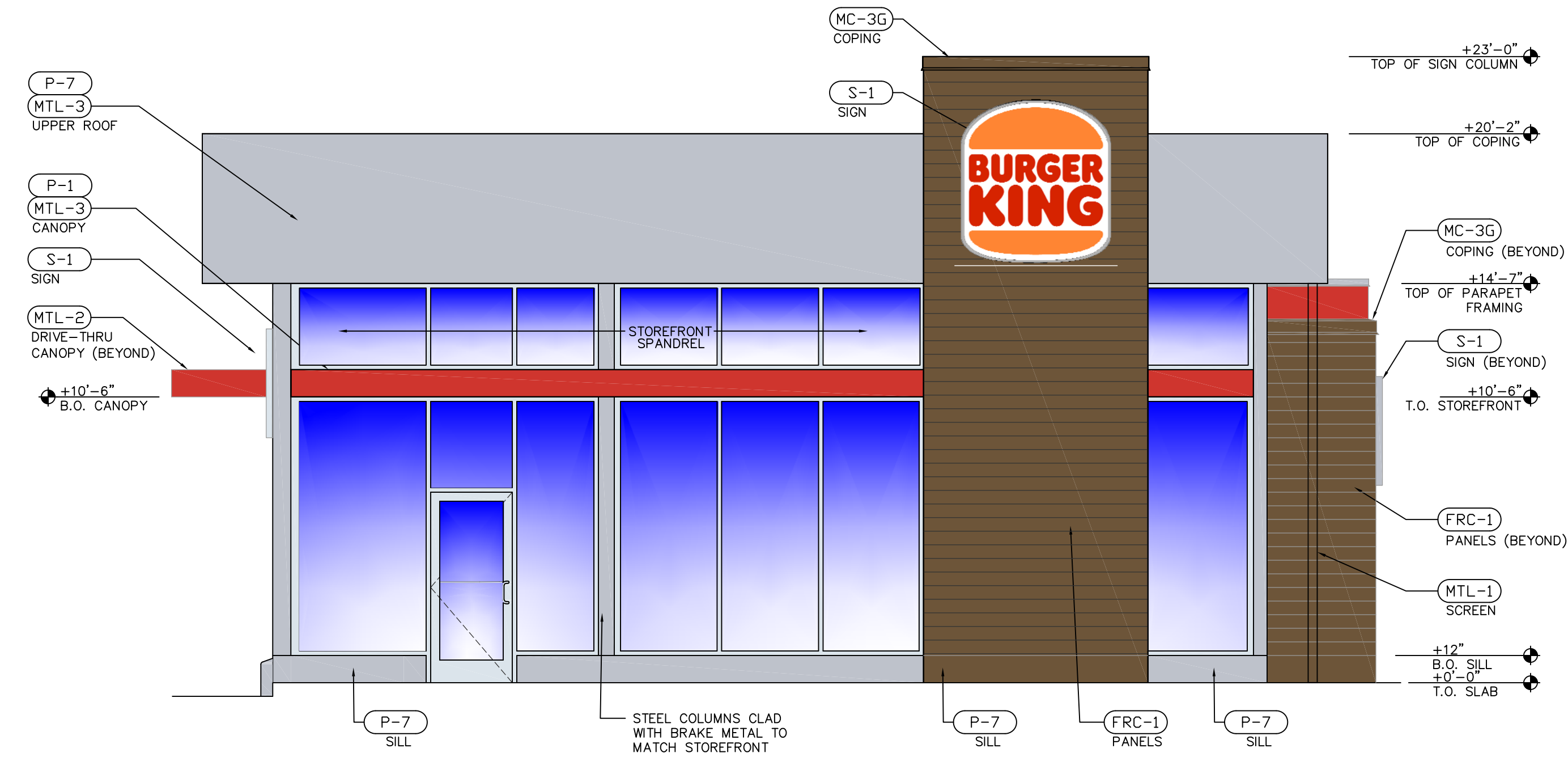


**1 MAIN ENTRANCE ELEVATION**  
SCALE: 1/4" = 1'-0"



**2 FRONT ELEVATION**  
SCALE: 1/4" = 1'-0"

EXTERIOR METAL		EXTERIOR GLAZING		EXTERIOR PAINT AND VINYL		EXTERIOR FACED PANELS					
<b>(MTL-1)</b> ARCHITECTURALLY-EXPOSED ALUM. FRAMING DESCRIPTION: ALUMINUM EXTRUDED CONTACT: ENTERA BRANDING 850.763.7982 SIZE: VARIES COLOR: WOOD GRAIN FINISH: 3M VINYL SIMULATING WOOD LOCATION: HANDCRAFTED SCREENS	<b>(MTL-3)</b> METAL COMPOSITE MATERIAL PANEL DESCRIPTION: COMPOSITE ALUMINUM PANELS MANUFACTURER: ALUCOBOND COLOR: ANODIC CLEAR MICA FINISH: PVDF-2 GLOSS 90 LOCATION: SILVER BAND OVERHANG	<b>(GL-1)</b> ALUMINUM-FRAMED STOREFRONT DESCRIPTION: SERIES 7000 ALUMINUM WINDOW WALL SYSTEM MANUFACTURER: GMP GLAZING - ES Windows FINISH: ANODIZED ALUMINUM, CLEAR GLAZING	<b>(GL-2)</b> DRIVE THRU WINDOWS DESCRIPTION: SELF-CLOSING, SINGLE SLIDING WINDOW MANUFACTURER: READY ACCESS MODEL #275 OR QUIKSERV MODEL #SC4030	<b>(P-1)</b> PAINTING MANUFACTURER: PPG COLOR: PPG BK FLAMING RED LOCATION: RED STRIPE NOTE: EXTERIOR GREY ACCENT PAINT	<b>(P-2)</b> PAINTING MANUFACTURER: PPG COLOR: PPG1021-4 DIVERSION NOTE: EXTERIOR GREY ACCENT PAINT	<b>(P-3)</b> PAINTING MANUFACTURER: FARROW & BALL COLOR: MANOR HOUSE GRAY NO.265 LOCATION: BOLLARDS, TRASH AREA NOTE: EXTERIOR DARK WOOD TONE PAINT	<b>(P-4)</b> VINYL MANUFACTURER: 3M TYPE: WOOD GRAIN COLOR: WG-1222 FINISH: VINYL LOCATION: HANDCRAFTED SCREENS AND DRIVE THROUGH EQUIPMENT.	<b>(P-7)</b> PAINTING MANUFACTURER: PPG COLOR: PPG6-230 LEAFING SILVER ALUM. FINISH: TEXTURED COATED METAL LOCATION: EXTERIOR SILVER BAND OVERHANG	<b>(EF-1)</b> EIFS SYSTEM DESCRIPTION: GREY EXTERIOR FINISH MANUFACTURER: STO OR APPROVED EQUAL CONTACT: P-2 FINISH: SMOOTH FINISH	<b>(EF-2)</b> EIFS SYSTEM DESCRIPTION: BROWN EXTERIOR FINISH MANUFACTURER: STO OR APPROVED EQUAL CONTACT: P-3 FINISH: SMOOTH FINISH	<b>(FRC-1)</b> FIBER REINFORCED CEMENT PANELS DESCRIPTION: HERITAGE WARM TEXTURED PANELS MANUFACTURER: NICHHA CONTACT: ANDREW BRIGGS, abriggs@nichha.com, 678.654.7002 MATERIAL: VINTAGE WOOD COLOR: CEDAR EPC762F

NO.	DATE	DRAWN BY:	CHECKED BY:	REVISION	DATE

**BURGER KING**  
BROADWAY RESTAURANT GROUP, INC  
11854 LACKLAND ROAD  
ST. LOUIS, MO 63146  
CONTACT: MIKE THEIS  
mike@bkr-restaurants.com  
618-210-1712

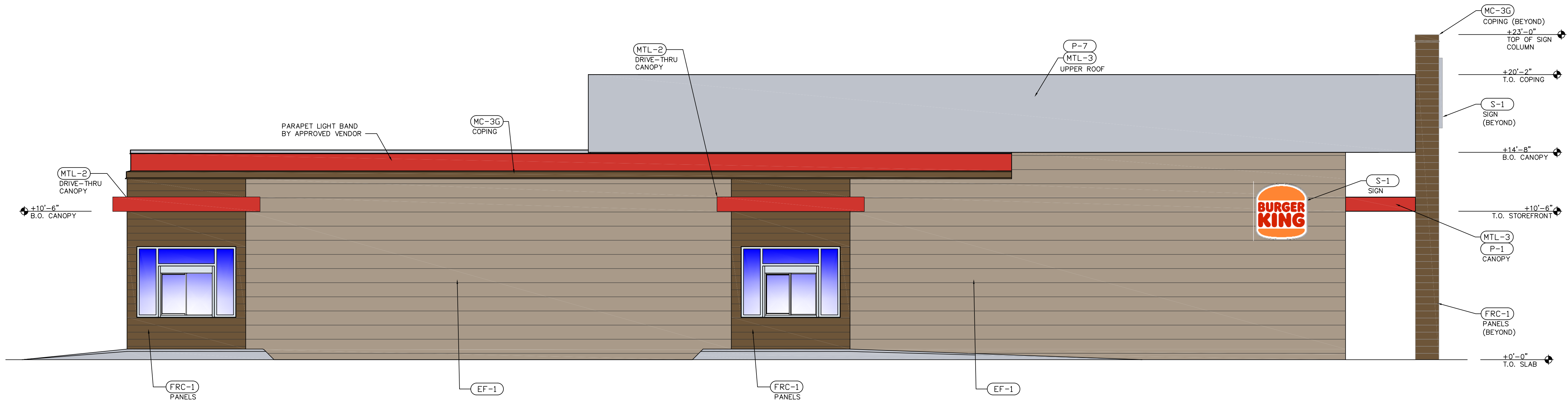
450 WEDMAN ROAD  
ST. LOUIS, MISSOURI 63011  
WWW.ANSWERSINC.COM  
CONTACT: DANIELLE TRITT  
DANIELLE@ANSWERSINC.COM

**ANSWERS**

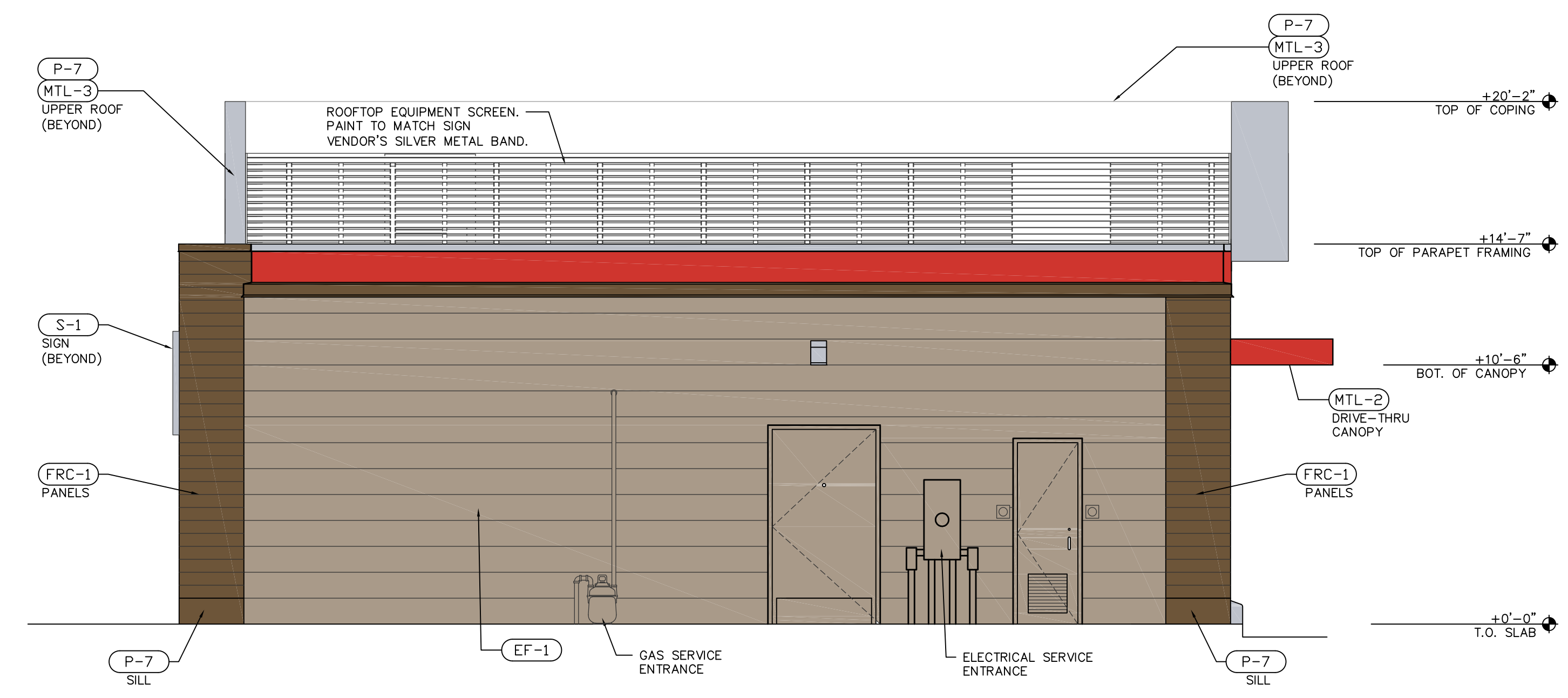
DATE: 09.03.2020

**BURGER KING RESTAURANT**  
10734 SUNSET HILLS PLAZA  
ST. LOUIS, MO 63127

EXTERIOR ELEVATIONS ALTERNATIVE




**1 DRIVE THROUGH ELEVATION**  
SCALE: 1/4" = 1'-0"



**2 REAR ELEVATION**  
SCALE: 1/4" = 1'-0"

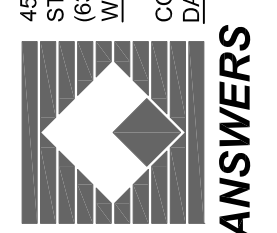
<p><b>EXTERIOR METAL</b></p> <p><b>(MTL-1)</b> ARCHITECTURALLY-EXPOSED ALUM. FRAMING DESCRIPTION: ALUMINUM EXTRUDED CONTACT: ENTERA BRANDING 850.763.7982 SIZE: VARIES COLOR: WOOD GRAIN FINISH: 3M VINYL SIMULATING WOOD LOCATION: HANDCRAFTED SCREENS</p> <p><b>(MTL-2)</b> METAL ROOF PANELS DESCRIPTION: METAL FLAT SHEET ROOFING MANUFACTURER: BERRIDGE CONTACT: ENTERA BRANDING 850.763.7982 COLOR: RED BRAND ACCENT FINISH: TO MATCH P-1 LOCATION: DRIVE THRU CANOPY</p>	<p><b>(MTL-3)</b> METAL COMPOSITE MATERIAL PANEL DESCRIPTION: COMPOSITE ALUMINUM PANELS MANUFACTURER: ALUCOBOND COLOR: ANODIC CLEAR MICA FINISH: PVDF-2 GLOSS 90 LOCATION: SILVER BAND OVERHANG</p>	<p><b>EXTERIOR GLAZING</b></p> <p><b>(GL-1)</b> ALUMINUM-FRAMED STOREFRONT DESCRIPTION: SERIES 7000 ALUMINUM WINDOW WALL SYSTEM MANUFACTURER: GMP GLAZING - ES Windows FINISH: ANODIZED ALUMINUM, CLEAR GLAZING</p> <p><b>(GL-2)</b> DRIVE THRU WINDOWS DESCRIPTION: SELF-CLOSING, SINGLE SLIDING WINDOW MANUFACTURER: READY ACCESS MODEL #275 OR QUIKSERV MODEL #SC4030</p>	<p><b>EXTERIOR PAINT AND VINYL</b> CONTACT: RICK GARLIN garlin@ppg.com</p> <p><b>(P-1)</b> PAINTING MANUFACTURER: PPG COLOR: PPG BK FLAMING RED LOCATION: RED STRIPE NOTE: RED BRAND ACCENT PAINT</p> <p><b>(P-2)</b> PAINTING MANUFACTURER: PPG COLOR: PPG1021-4 DIVERSION NOTE: EXTERIOR GREY ACCENT PAINT</p> <p><b>(P-3)</b> PAINTING MANUFACTURER: FARROW &amp; BALL COLOR: MANOR HOUSE GRAY NO.265 LOCATION: BOLLARDS, TRASH AREA NOTE: EXTERIOR DARK WOOD TONE PAINT</p>	<p><b>(P-4)</b> VINYL MANUFACTURER: 3M TYPE: WOOD GRAIN COLOR: WG-1222 FINISH: VINYL LOCATION: HANDCRAFTED SCREENS AND DRIVE THROUGH EQUIPMENT.</p> <p><b>(P-7)</b> PAINTING MANUFACTURER: PPG COLOR: PPG6-230 LEAFING SILVER ALUM. FINISH: TEXTURED COATED METAL LOCATION: EXTERIOR SILVER BAND OVERHANG</p>	<p><b>(EF-1)</b> EIFS SYSTEM DESCRIPTION: GREY EXTERIOR FINISH MANUFACTURER: STO OR APPROVED EQUAL CONTACT: P-2 FINISH: SMOOTH FINISH</p> <p><b>(EF-2)</b> EIFS SYSTEM DESCRIPTION: BROWN EXTERIOR FINISH MANUFACTURER: STO OR APPROVED EQUAL CONTACT: P-3 FINISH: SMOOTH FINISH</p>	<p><b>EXTERIOR FACED PANELS</b></p> <p><b>(FRC-1)</b> FIBER REINFORCED CEMENT PANELS DESCRIPTION: HERITAGE WARM TEXTURED PANELS MANUFACTURER: NICHHA CONTACT: ANDREW BRIGGS, abriggs@nichha.com, 678.654.7002 MATERIAL: VINTAGE WOOD COLOR: CEDAR EPC762F</p>
---	---	--	---	---	--	---

DATE: \_\_\_\_\_  
REVISION: \_\_\_\_\_  
CHECKED BY: \_\_\_\_\_  
DRAWN BY: \_\_\_\_\_  
NO. DATE: \_\_\_\_\_



BROADWAY RESTAURANT GROUP, INC  
11854 LACKLAND ROAD  
ST. LOUIS, MO 63146  
CONTACT: MIKE THIES  
mike@broadway-restaurants.com  
618-210-1712

450 WEDMAN ROAD  
ST. LOUIS, MISSOURI 63011  
WWW.ANSWERSINC.COM  
CONTACT: DANIELLE TRITT  
DANIELLE@ANSWERSINC.COM



**ANSWERS**

DATE: 09.03.2020

**BURGER KING RESTAURANT**  
10734 SUNSET HILLS PLAZA  
ST. LOUIS, MO 63127

EXTERIOR ELEVATIONS ALTERNATIVE

**A-2.1**