

N/F
MIKE CORIC
DB 21520 PG 1725

S75°15'30"E
74.30'

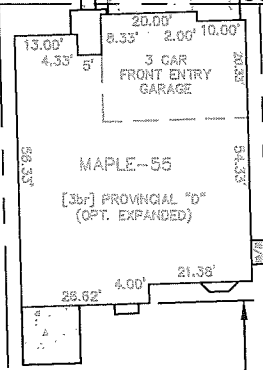
S75°15'30"E
74.30'

WEBER HILL (40'W.) ROAD

S75°15'30"E 158.80'

N13°06'31"E 190.61'

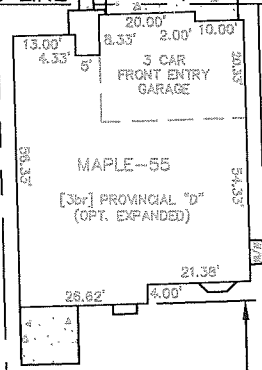
10' SIDE YARD



12830 WEBER HILL ROAD
15,582 SQ.FT.

10' SIDE YARD

S13°06'31"W 229.00'



12826 WEBER HILL ROAD
18,433 SQ.FT.

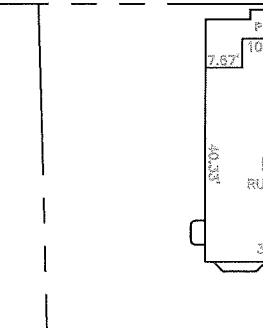
10' SIDE YARD (REQUEST TYP.)

S13°06'31"W 267.39'

LOT 1
DAVID J GREGORY
SUBDIVISION
PB PG

N13°06'31"E 220.12'

15' SIDE YARD



LOT 2
43,560 S.F.
OR 1 ACRE

12814 WEBER HILL ROAD
"R-1 DIST."

15' SIDE YARD

S13°06'31"W 267.39'

N/F
MARK BENZ
DB 7521 PG 2180

N48°16'58"W
84.60'

N/F
CLIFFORD RINGIS
DB 14158 PG 77

N48°16'58"W
84.60'

N58°55'30"E
65.89'

N75°15'30"W 206.07'

N/F
CHARLES AND
NANCY BENZ
DB 4642 PG 357

WEBER HILL VARIANCES				
ADDRESS	R-1 DIST.	#12814	#12826	#12830
LOT SQ. FT.	43,560	43,560	18,433	15,582
MAX. BUILDING COVERAGE %	15.0	15.0	26.0	26.0
SIDE-YARD SETBACK	15'	15'	10'	10'
FRONT BUILDING LINE	50'	30'	30'	30'

A-18-21 thru
A-24-21

THE **STERLING** CO.
ENGINEERS & SURVEYORS

5055 New Baumgartner Road
St. Louis, Missouri 63129
(314)-487-0440 FAX 487-8944
www.sterling-eng-sur.com

M.S.D.

DRAWN:

DESIGNED:

CHECKED:

PROJECT:

WEBER HILL ROAD

SHEET TITLE:

LOT COVERAGE EXHIBIT

NO. 21

06

183

ISSUE

SHEET

1
OF
1