

GRAPHIC SCALE: 1" = 30'



CASTLE CONTRACTING, LLC
 Design Build | Civil Construction
 345 Marshall Avenue | Suite 302
 Webster Groves, Missouri 63119
 p: 314-421-0042 | f: 314-231-9157
 http://www.digcastle.com
 Missouri Engineering Corporation
 Certificate of Authority No.: 2018041146
INTEGRITY • INTENSITY • INTELLIGENCE

PREPARED FOR:

SANSONE GROUP
 GRANT MECHLIN
 120 S. CENTRAL AVE, SUITE 500
 ST. LOUIS, MISSOURI 63105
 314-727-6664

SIGNATURE _____

DATE _____

THE SEAL AND SIGNATURE APPLY ONLY TO THE DOCUMENT TO WHICH THEY ARE AFFIXED. THE SIGNER OF THIS DOCUMENT EXPRESSLY DISCLAIMS ANY AND ALL RESPONSIBILITY FOR DOCUMENTS THAT DO NOT BEAR HIS SEAL AND SIGNATURE INCLUDING, BUT NOT NECESSARILY LIMITED TO, DRAWINGS, SPECIFICATIONS, ESTIMATES, REPORTS AND OTHER SIMILAR INSTRUMENTS OF SERVICES INTENDED TO BE USED FOR THIS PROJECT.

Project No.	21019
Date	2022 02-04
Drawn By	ALH
Checked By	JSP

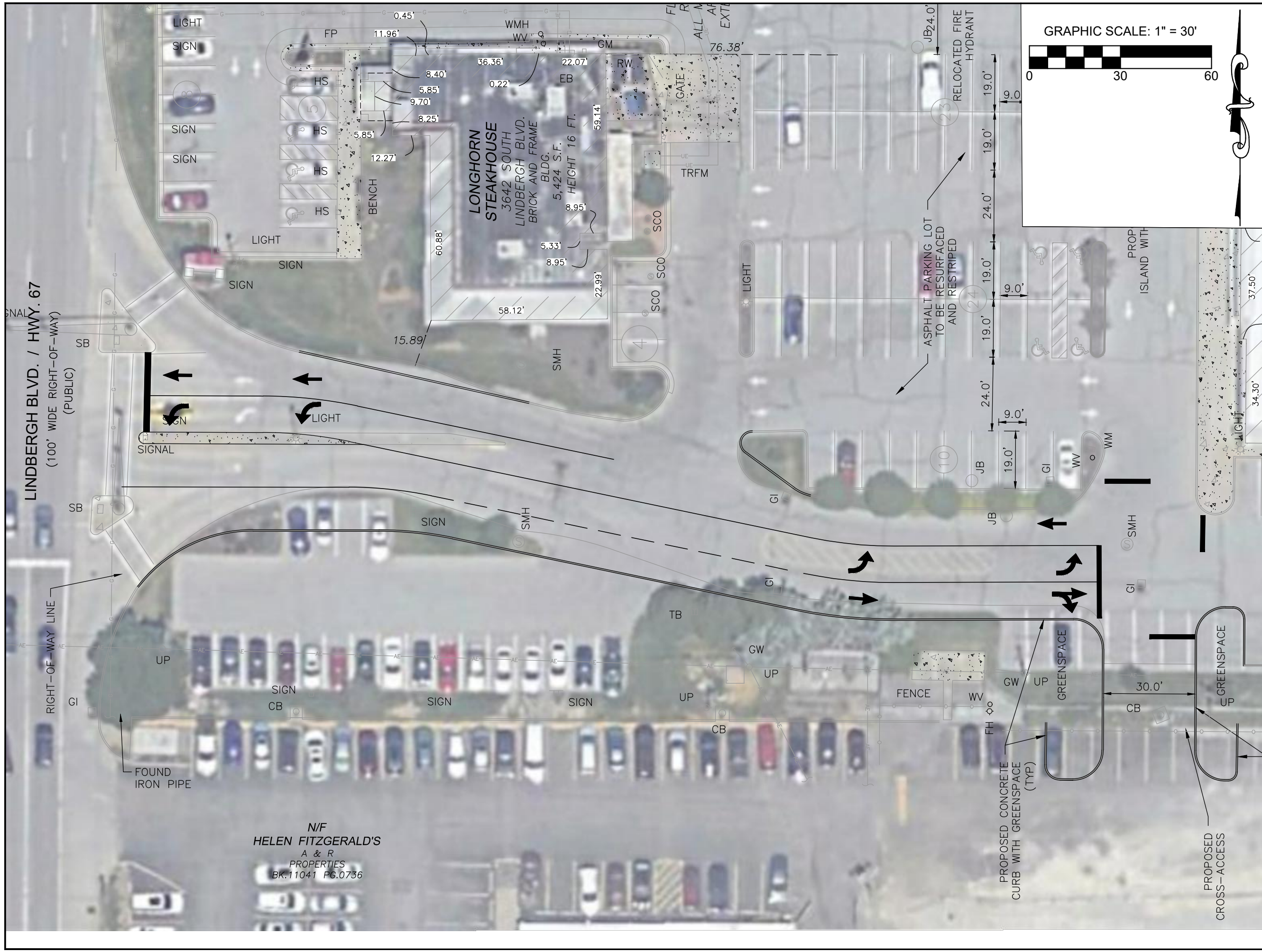
LINDBERGH ENTRANCE EXHIBIT

SHEET
1

N/F
 HELEN FITZGERALD'S
 A & R
 PROPERTIES
 BK.11041 PG.0736

LINDBERGH BLVD. / HWY. 67
 (100' WIDE RIGHT-OF-WAY)
 (PUBLIC)

RIGHT-OF-WAY LINE



CASTLE CONTRACTING, LLC
 Design Build | Civil Construction
 345 Marshall Avenue | Suite 302
 Webster Groves, Missouri 63119
 p: 314-421-0042 | f: 314-231-9157
 http://www.digcastle.com
 Missouri Engineering Corporation
 Certificate of Authority No.: 2018041146
INTEGRITY • INTENSITY • INTELLIGENCE

PREPARED FOR:
SANSONE GROUP
GRANT MECHLIN
 120 S. CENTRAL AVE, SUITE 500
 ST. LOUIS, MISSOURI 63105
 314-727-6664

SIGNATURE _____

DATE _____

THE SEAL AND SIGNATURE APPLY ONLY TO THE DOCUMENT TO WHICH THEY ARE AFFIXED. THE SIGNER OF THIS DOCUMENT EXPRESSLY DISCLAIMS ANY AND ALL RESPONSIBILITY FOR DOCUMENTS THAT DO NOT BEAR HIS SEAL AND SIGNATURE INCLUDING, BUT NOT NECESSARILY LIMITED TO, DRAWINGS, SPECIFICATIONS, ESTIMATES, REPORTS AND OTHER SIMILAR INSTRUMENTS OF SERVICES INTENDED TO BE USED FOR THIS PROJECT.

Project No.	21019
Date	2022 02-04
Drawn By	ALH
Checked By	JSP

LINDBERGH ENTRANCE EXHIBIT

SHEET
2

LINDBERGH BLVD. / HWY. 67
 (100' WIDE RIGHT-OF-WAY)
 (PUBLIC)

N/F
 HELEN FITZGERALD'S
 A & R
 PROPERTIES
 BK.11041 PG.0736