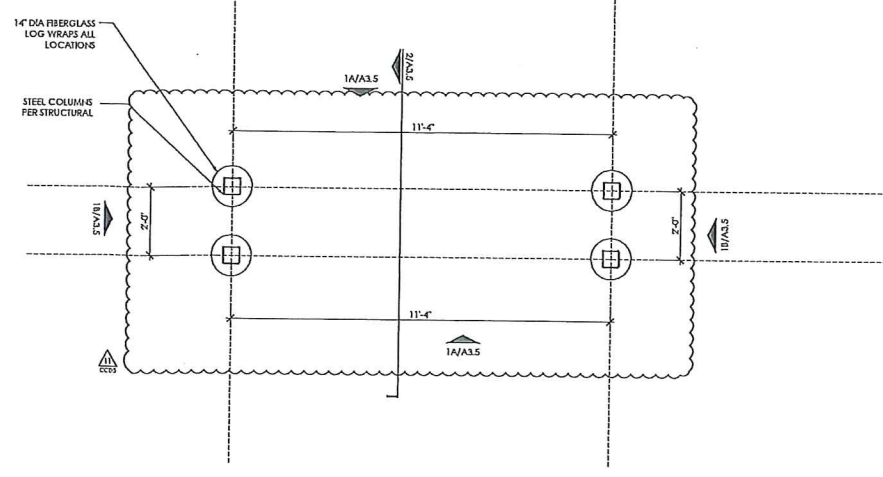


**3** PYLON SIGN SECTION  
SCALE 1" = 1'-0"

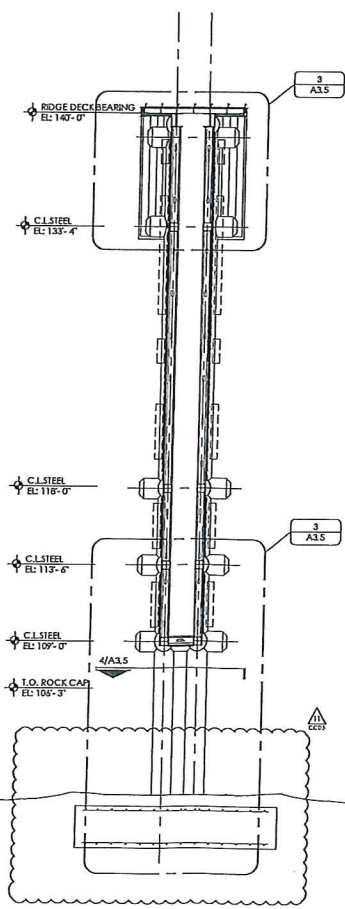
- STANDING SEAM ROOFING (MATCH STORE) OVER 5/8" 1X1 FLYWOOD SIGNS OVER 3" METAL DECK - REFER TO STRUCTURAL
- FRESHENED DRP EDGE
- 2X6 WOOD FASCIA
- STEEL ANGLE FOR STRUCT
- 3" METAL DECK WITH TUBES STEEL IN FLUTES FOR STRUCT
- 1X WOOD SOFFIT OVER 1/2" FLYWOOD OVER 1/2" METAL CHANNEL
- PARTIAL FIBERGLASS LOG WRAP
- STEEL BEAM WITH METAL STUD INFL
- 1 1/4" DIA LOG WRAP BEYOND W 1/4" CHAMFER TIP
- OFFICE SIGNAGE
- WOOD LAP SIDING OVER MOISTURE BARRIER OVER 1/2" F.P. FLYWOOD OVER 6" METAL STUDS
- TUBE STEEL BEAM FOR STRUCTURAL

- 1 1/4" DIA LOG WRAP BEYOND W 1/4" CHAMFER TIP
- PARTIAL FIBERGLASS LOG WRAP
- OFFICE SIGNAGE
- WOOD LAP SIDING OVER MOISTURE BARRIER OVER 1/2" F.P. FLYWOOD OVER 6" METAL STUDS
- TUBE STEEL BEAM FOR STRUCTURAL
- FLASHING, RUN UP 6" MIN UNDER MOISTURE BARRIER, PROVIDE SEALANT UNDER FLASHING, TIP EACH LOG
- 1 1/4" DIA LOG WRAP W 1/4" CHAMFER TIP
- 1X WOOD SOFFIT OVER MOISTURE BARRIER OVER 1/2" F.P. FLYWOOD OVER 3/4" METAL STD @ 24" O.C.

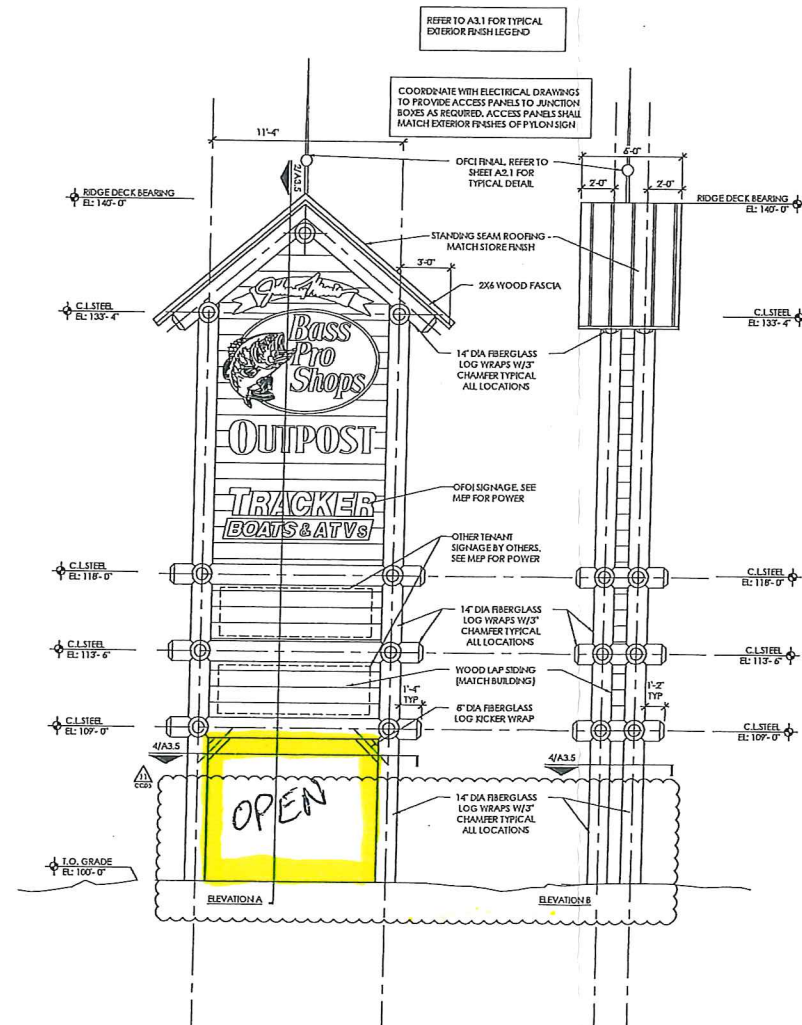
A-16-22



**4** PYLON SIGN PLAN  
SCALE 1/2" = 1'-0"



**2** PYLON SIGN SECTION  
SCALE 1/4" = 1'-0"



**1** PYLON SIGN ELEVATION  
SCALE 1/4" = 1'-0"

- EXTERIOR FINISH NOTES
- MATCH ALL BUILDING FINISHES FOR PYLON SIGN. SEE A3.1 FOR TYPICAL FINISHES.
  - EXPOSED WOOD EDGES ARE TO BE STAINED OR AGED.
  - GC IS RESPONSIBLE FOR ALL REQUIRED FIRE TREATED BLOCKING WITHIN WALLS AND ROOFS FOR SIGN CONNECTIONS. COORDINATE LOCATIONS WITH SIGN VENDOR.
  - ALL SIGNAGE IS OFF UNLESS NOTED OTHERWISE. ALL SIGN MOUNTING BY SIGN VENDOR. GC TO COORDINATE AND INSTALL ALL REQUIRED SIGNAGE BLOCKING.
  - PAINT ALL EXPOSED RECEPTACLE COVERPLATES, CAMERAS (NOT ON LEDS OR ANY ACRYLIC DOMES), EXPOSED ELECTRICAL AND GAS PIPING SHALL BE PAINTED THE SAME COLOR AS THE ADJACENT WALL.
  - ALL SHINY FINISH FASTENERS USED ON RECLAIMED OR RUSTIC FINISHED MATERIAL LIKE CORRUGATED TIN, WOOD, TOILET PARTITIONS, FLOORING, SIGNAGE, ETC. SHALL BE PAINTED, STAINED, FINISHED, OR PLUGGED TO BLEND INTO RECLAIMED MATERIAL.

**Bass Pro Shops**  
**Cabela's**  
BASS PRO SHOPS  
CABELA'S  
OUTPOST  
SUNSET HILLS  
MISSOURI

**IDeA**  
Insight Design Architects, LLC  
115 S. Main St., Nixa, MO 65714 P: 417-224-8553



**BLANCHARD AE GROUP, LLC**  
LAURA BLANCHARD, P.E.  
PROFESSIONAL ENGINEER NO. E-42941-S  
1425 WALKERUSA DR STE B LAWRDANCE, KS 66049  
PH: 785-993-0000  
L.BLANCHARD@BAE.GROUP

**METTEMMEYER ENGINEERING**  
1015 WINDYBUSH BLVD., SUITE 100, BRIDGEVIEW, MO 64015  
PH: 417-442-1122

**RA DESIGN**

REVISION DATE

04/15/2022	CCD 3
05/10/22	C.CDS

PHOTOGRAPH OF RECORD	
DATE	04.15.2022
PROJECT NO.	21-031
DATE	04.15.2022
DESIGN BY	JO WETT
PROJECT NO.	21-031
DATE	04.15.2022
DESIGN BY	JO WETT
PROJECT NO.	21-031
DATE	04.15.2022
DESIGN BY	JO WETT

PROJECT NO. 21-031  
DATE 04.15.2022  
DESIGN BY JO WETT  
PROJECT NO. 21-031  
DATE 04.15.2022  
DESIGN BY JO WETT

PROJECT NO. 21-031  
DATE 04.15.2022  
DESIGN BY JO WETT  
PROJECT NO. 21-031  
DATE 04.15.2022  
DESIGN BY JO WETT

PROJECT NO. 21-031  
DATE 04.15.2022  
DESIGN BY JO WETT  
PROJECT NO. 21-031  
DATE 04.15.2022  
DESIGN BY JO WETT

A-16-22

A3.5