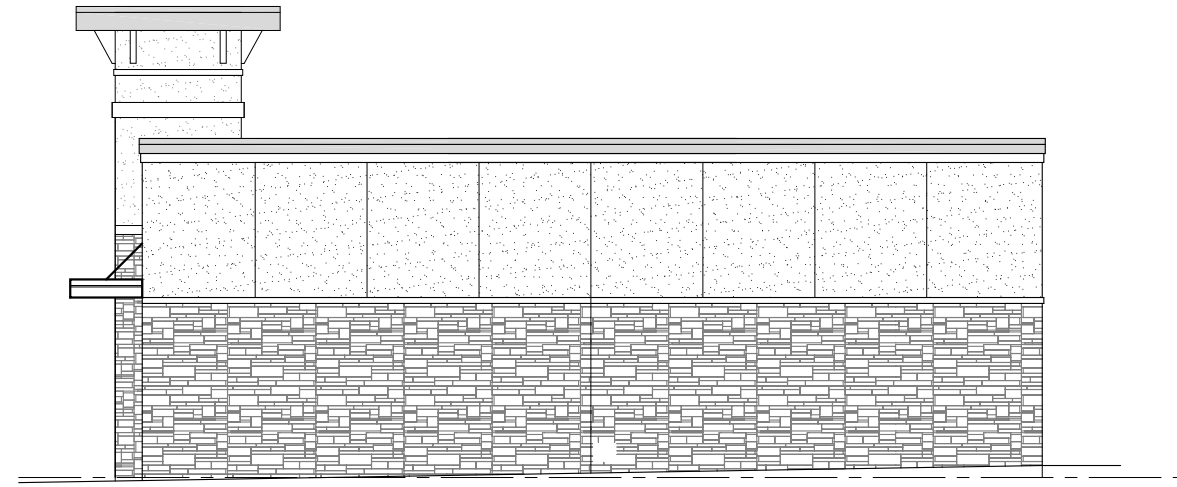


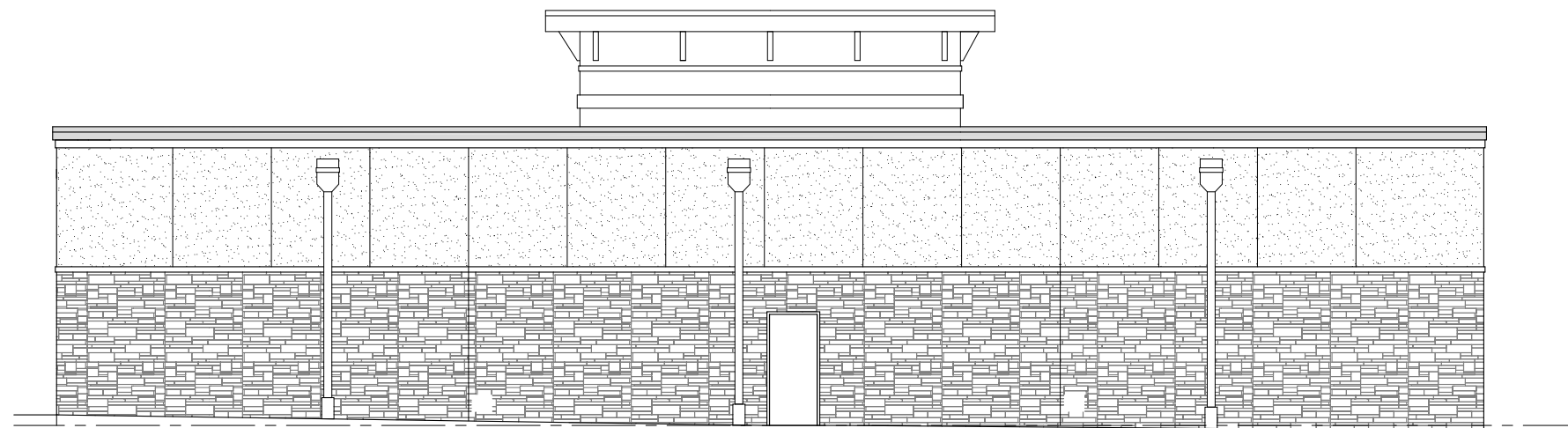
FRONT ELEVATION

SCALE: 3/32" = 1'-0"



SIDE ELEVATION

SCALE: 3/32" = 1'-0"



REAR ELEVATION

SCALE: 3/32" = 1'-0"

PROPOSED C-STORE DESIGN FOR:
JUMPIN JORDYS GAS STATION

MAURER INDUSTRIAL DRIVE
 ST. LOUIS, MISSOURI

RANGWALA ARCHITECTS
 ARCHITECTURE SITE PLANNING