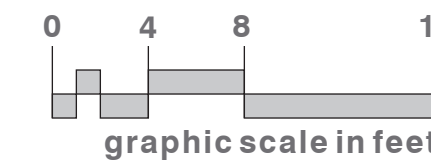
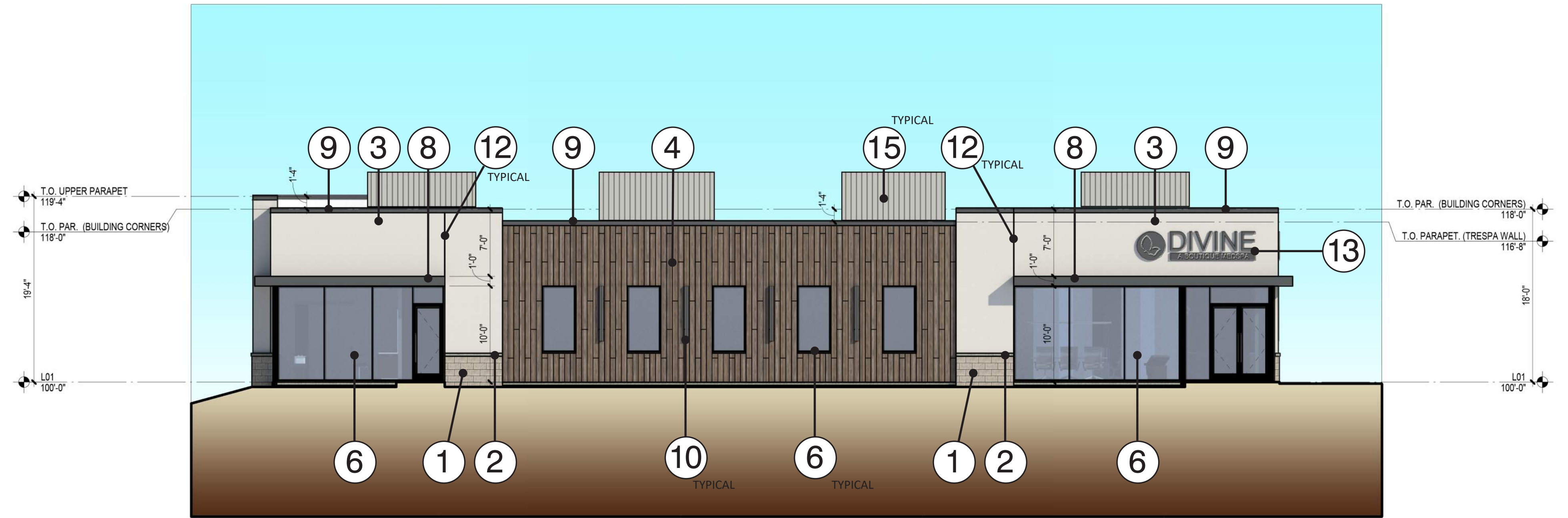
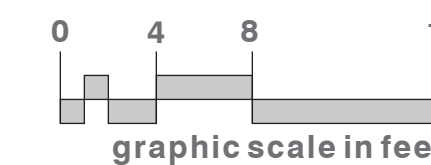
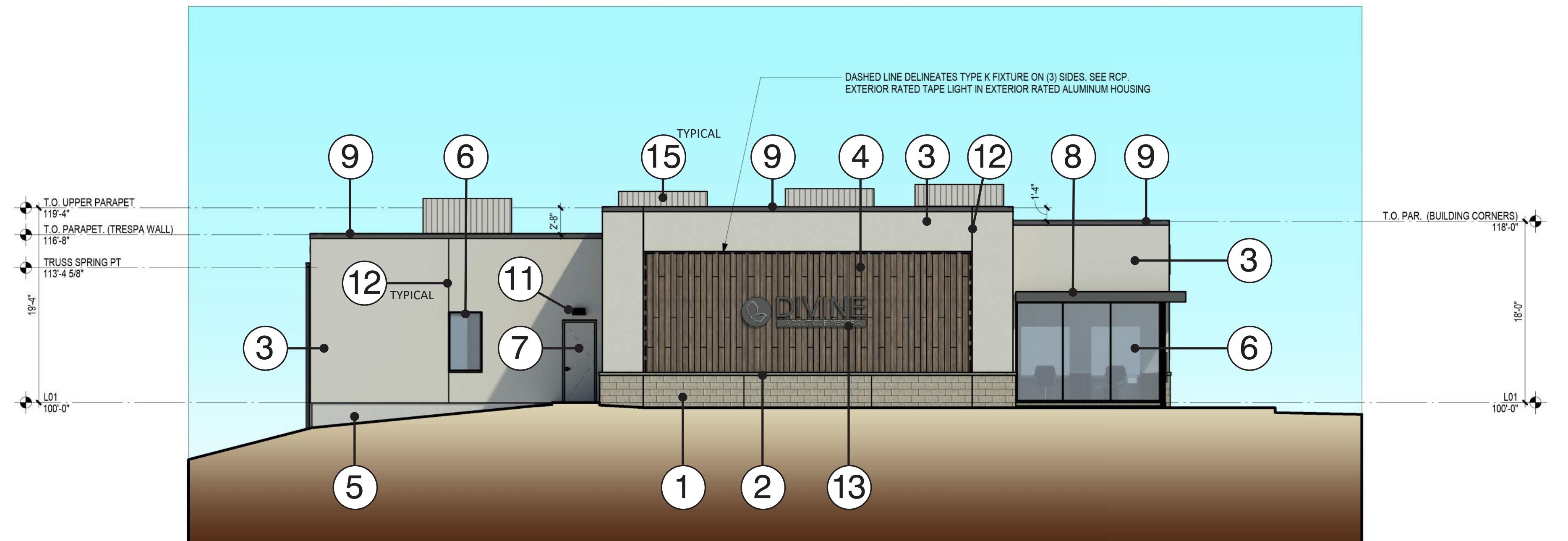


Keynote Legend:

- ① CMU Veneer: 8" x 16" split face CMU, Running Bond, Color: Pewter, w/ Portland & Lime Natural Mortar.
- ② Cast Stone: Midwest Cast Stone, Color: 16AC w/ Portland & Lime Natural Mortar.
- ③ EIFS-01: Exterior Insulation & Finish System. Color: Beige, TBD, Finish: Fine Finish.
- ④ Vertical Wood-Look siding, Color: Medium brown, TBD.
- ⑤ Exposed concrete foundation wall.
- ⑥ Black Anodized Aluminum Storefront Framing with clear insulated glazing
- ⑦ Insulated hollow metal door and hollow metal door frame. Color: Black.
- ⑧ Projecting Canopy: Aluminum Canopy w/ anodized matte black finish to match storefront sytem.
- ⑨ Prefabricated Metal Coping-01: Color Black.
- ⑩ Wall mounted decorative light sconce. Color Black.
- ⑪ Wall mounted light fixture. Color Black.
- ⑫ 3/4" W. x 3/4" D. scored EIFS joint or masonry control joint.
- ⑬ Building Signage. Under Seperate Review.
- ⑭ Metal gutter and/or downspout. Color: Black.
- ⑮ Mechanical Screen, typical at all rooftop equipment. Vertical ribbed design. Color: Beige (match EIFS)



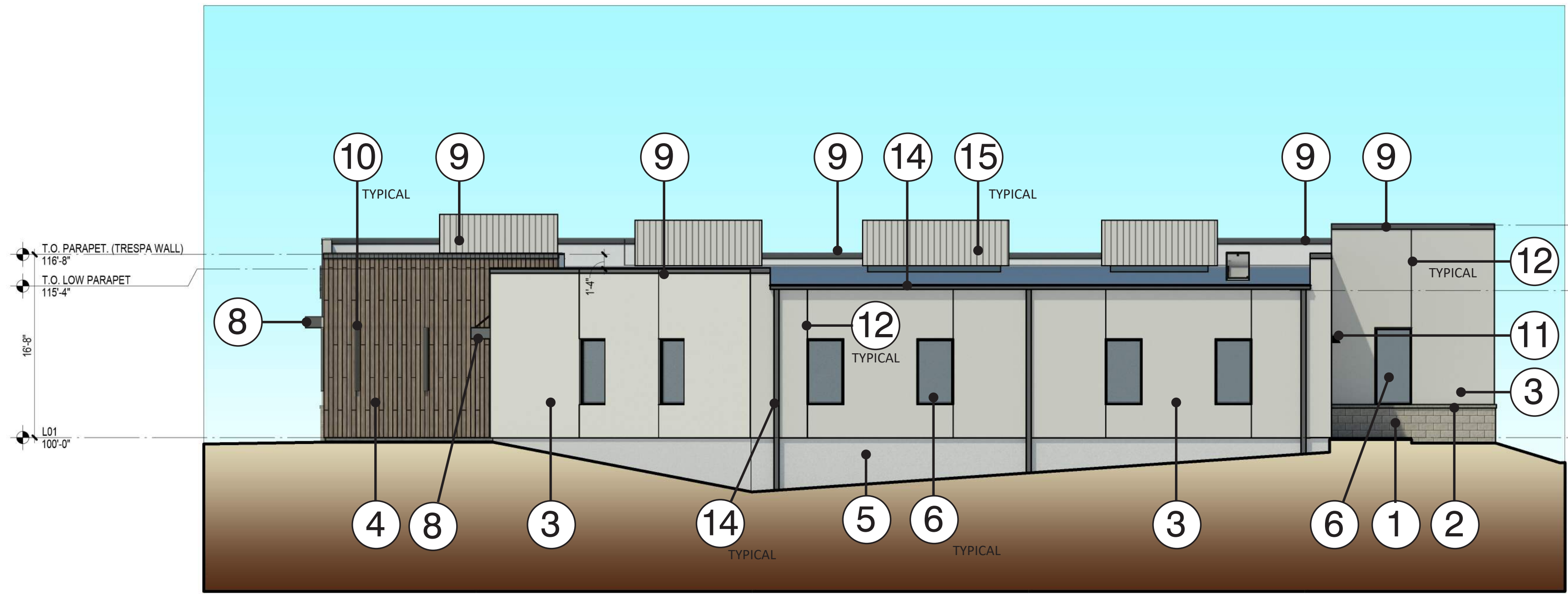
South Exterior Elevation



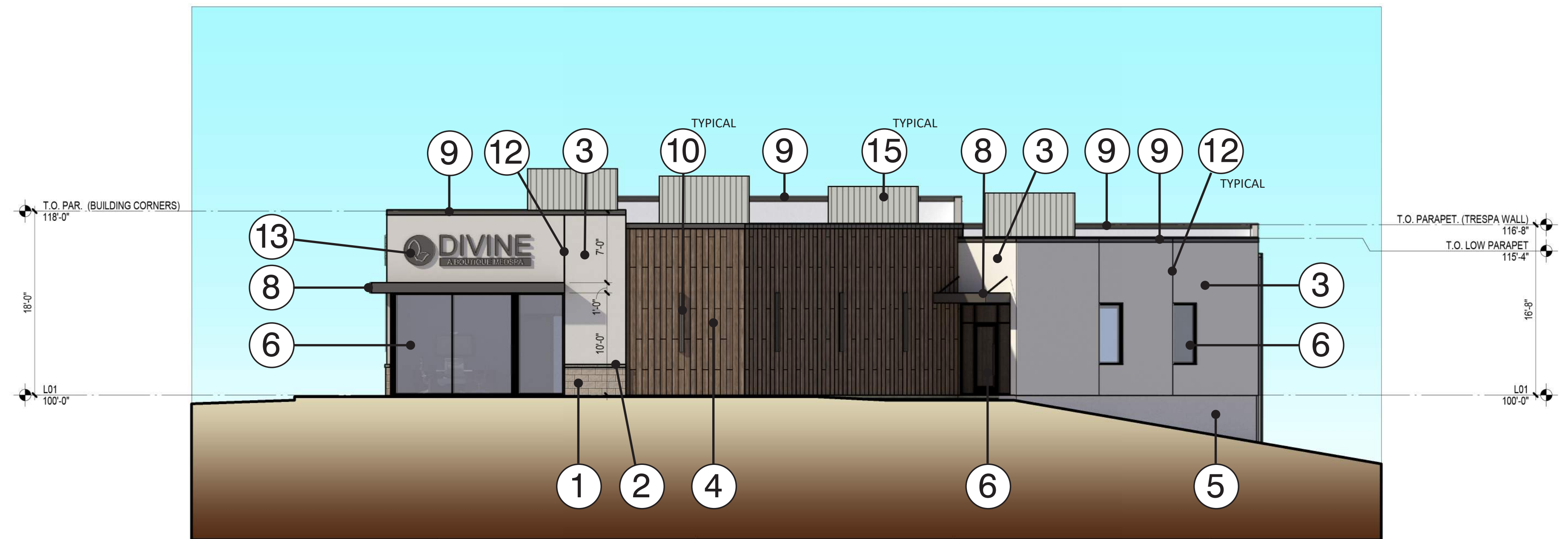
West Exterior Elevation

Keynote Legend:

- ① CMU Veneer: 8" x 16" split face CMU, Running Bond, Color: Pewter, w/ Portland & Lime Natural Mortar.
- ② Cast Stone: Midwest Cast Stone, Color: 16AC w/ Portland & Lime Natural Mortar.
- ③ EIFS-01: Exterior Insulation & Finish System. Color: Beige, TBD, Finish: Fine Finish.
- ④ Vertical Wood-Look siding, Color: Medium brown, TBD.
- ⑤ Exposed concrete foundation wall.
- ⑥ Black Anodized Aluminum Storefront Framing with clear insulated glazing
- ⑦ Insulated hollow metal door and hollow metal door frame. Color: Black.
- ⑧ Projecting Canopy: Aluminum Canopy w/ anodized matte black finish to match storefront sytem.
- ⑨ Prefabricated Metal Coping-01: Color Black.
- ⑩ Wall mounted decorative light sconce. Color Black.
- ⑪ Wall mounted light fixture. Color Black.
- ⑫ 3/4" W. x 3/4" D. scored EIFS joint or masonry control joint.
- ⑬ Building Signage. Under Seperate Review.
- ⑭ Metal gutter and/or downspout. Color: Black.
- ⑮ Mechanical Screen, typical at all rooftop equipment. Vertical ribbed design. Color: Beige (match EIFS)



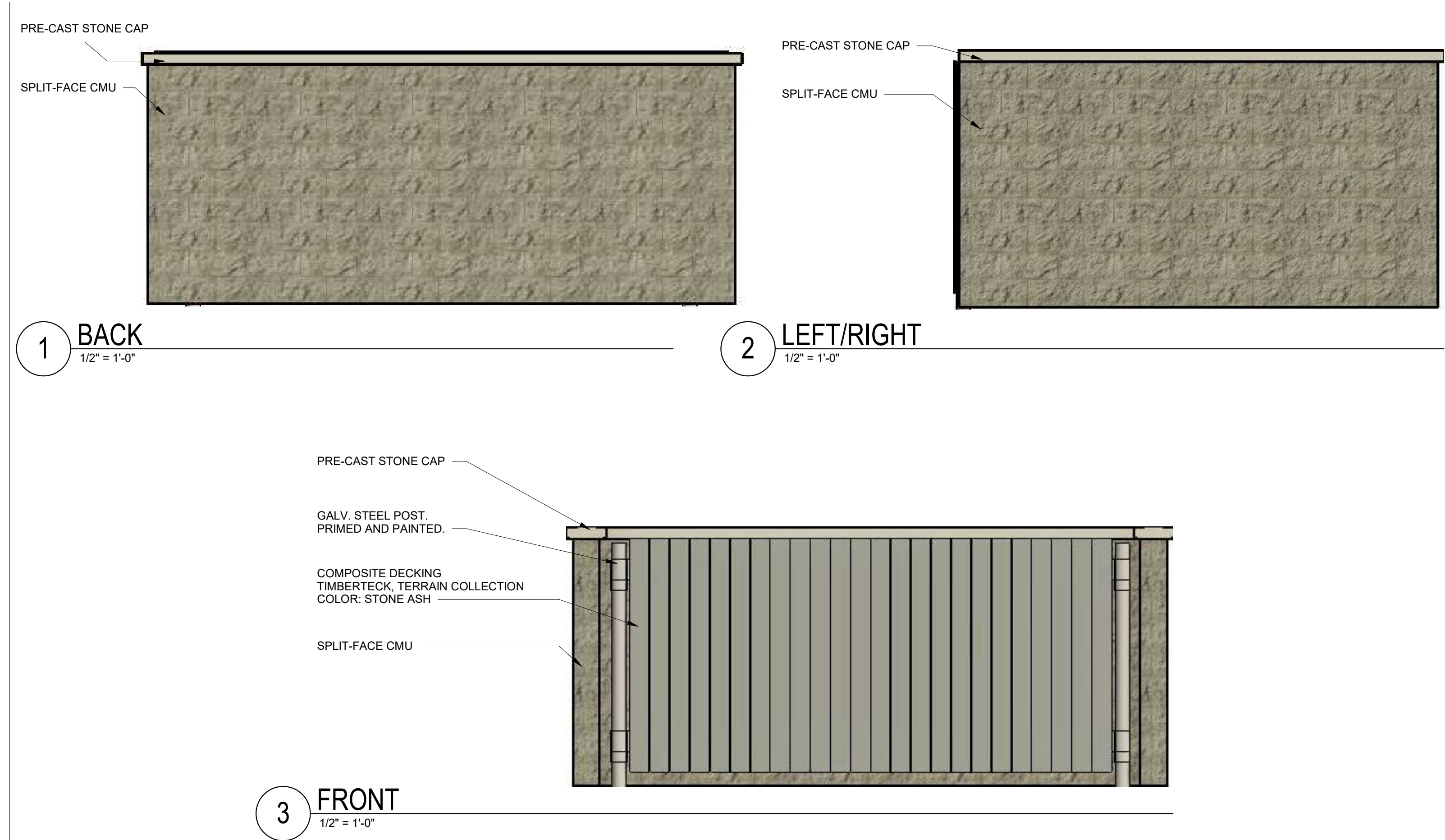
0 4 8 16 graphic scale in feet North Exterior Elevation



0 4 8 16 graphic scale in feet East Exterior Elevation

Keynote Legend:

- ① CMU Veneer: 8" x 16" split face CMU, Running Bond, Color: Pewter, w/ Portland & Lime Natural Mortar.
- ② Cast Stone: Midwest Cast Stone, Color: 16AC w/ Portland & Lime Natural Mortar.
- ③ EIFS-01: Exterior Insulation & Finish System. Color: Beige, TBD, Finish: Fine Finish.
- ④ Vertical Wood-Look siding, Color: Medium brown, TBD.
- ⑤ Exposed concrete foundation wall.
- ⑥ Black Anodized Aluminum Storefront Framing with clear insulated glazing
- ⑦ Insulated hollow metal door and hollow metal door frame. Color: Black.
- ⑧ Projecting Canopy: Aluminum Canopy w/ anodized matte black finish to match storefront sytem.
- ⑨ Prefabricated Metal Coping-01: Color Black.
- ⑩ Wall mounted decorative light sconce. Color Black.
- ⑪ Wall mounted light fixture. Color Black.
- ⑫ 3/4" W. x 3/4" D. scored EIFS joint or masonry control joint.
- ⑬ Building Signage. Under Seperate Review.
- ⑭ Metal gutter and/or downspout. Color: Black.
- ⑮ Mechanical Screen, typical at all rooftop equipment. Vertical ribbed design. Color: Beige (match EIFS)



Dumpster Enclosure Elevations