

in doing this. AmerenUE cannot force its customers to make that investment.

The photo shows a typical **overhead service entrance** for a residential customer. Of the items shown, AmerenUE owns the **service wires, house knob and meter** — the customer owns everything else.

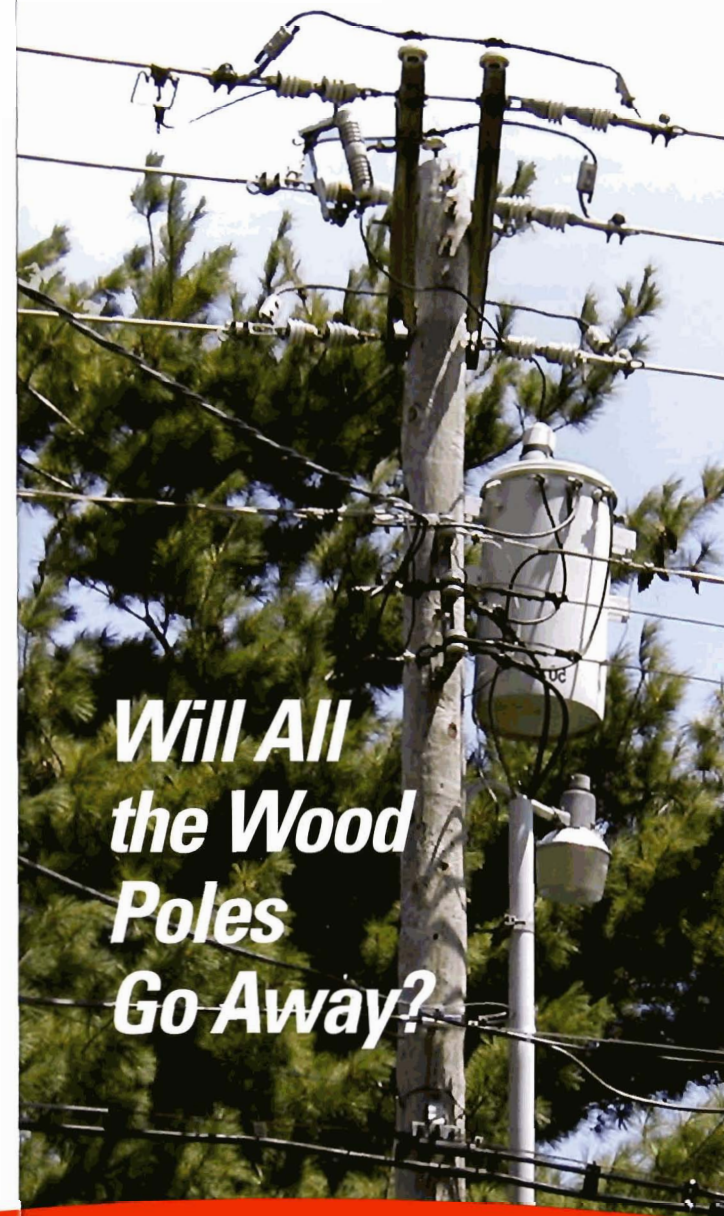
As part of the job of placing service wires like these underground, the customer is responsible for installing a new **meter box** that accepts “bottom-fed” cables from underneath (as opposed to “top-fed” wires from above). The customer is also responsible for installing a new **buried service conduit** on the property all the way to the underside of the new meter box — this is the plastic pipe that houses AmerenUE’s underground service cable. Finally, the customer is responsible for removing the **weather head, drip loop wires, service entrance pipe and old meter box**.

During the course of the Undergrounding Conversion Program, whenever AmerenUE encounters overhead service wires to individual homes connected to the poles it intends to vacate, AmerenUE will contact the affected residential customers and invite them to participate in undergrounding those service wires at the same time AmerenUE is removing its pole-to-pole spans of wire.

For those **residential customers** choosing to participate, AmerenUE will (1) install and connect new underground service cables to their homes in their new buried service conduits free of charge and (2) issue individual \$750 rebate checks to those customers for the installation of the buried service conduits on their properties.

For those **residential customers** choosing not to participate, AmerenUE will make the necessary provisions to keep their overhead service wires undisturbed — meaning the poles those service wires are connected to will remain in place. *It is important to note that all customers, regardless of these individual decisions, will benefit equally from the removal of AmerenUE’s spans of overhead wire.*

**For more information,
call 1-877-365-POWR (1-877-365-7697)**



**Will All
the Wood
Poles
Go Away?**

As part of the Undergrounding Conversion Program, AmerenUE will be removing those overhead lines and equipment that represent the greatest threat to service reliability, especially in heavily treed areas. These include the overhead spans of wire from pole to pole, the overhead transformers, and all the overhead connections to those spans of wire. This effort to improve reliability is part of AmerenUE's three-year \$1 billion initiative called Project Power On.

You may be wondering whether or not all the poles will be removed after all this is taken down. There are actually two situations in which some or all of the poles involved in the conversion would have to remain in place:

- Overhead telephone and/or cable TV wires still exist on the poles after AmerenUE removes its overhead wires and equipment. In this case, most of the poles would probably remain, just without the power lines on top. They'd be cut to three feet or so above where the phone and cable TV spans are attached, reducing them to about half their original height.
- Customers with overhead service wires to their homes or buildings elect to keep those service wires overhead as opposed to having them undergrounded with the rest of AmerenUE's pole-to-pole spans of wire.

Overhead Telephone and Cable TV Wires

The photograph to the right shows a span of AmerenUE's overhead wire — the “high voltage” wires are those highest on the pole, while the “low voltage” wires are situated below them. Most of the poles in Missouri with AmerenUE wires and equipment on them

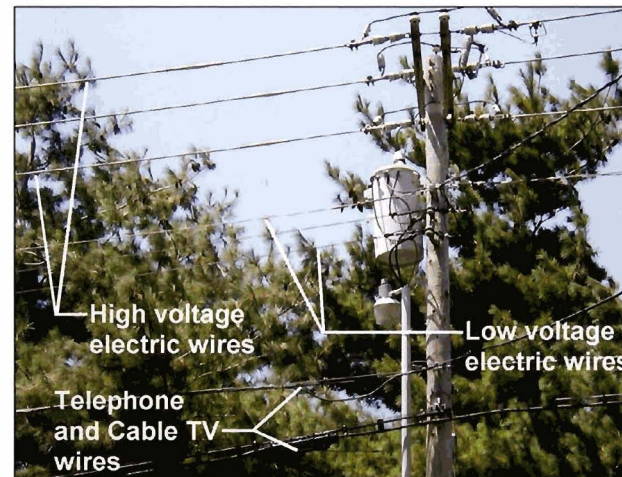
are owned by AmerenUE. The remaining poles are owned by telephone and cable TV companies.

Regardless of pole ownership, when **overhead telephone or cable TV wires** exist on a pole with AmerenUE's wires, they are always attached at the pole's lowest point, well below the electric wires.

While AmerenUE will proceed to remove and underground its overhead spans of wire, we cannot force the other utilities to do the same — even if AmerenUE owns the pole.

During the course of the Undergrounding Conversion Program, whenever AmerenUE encounters other utility wires on the poles it intends to vacate, AmerenUE will contact the other utilities and invite them to underground their lines at the same time — the potential always exists for construction savings when doing this together.

If one or more of the other utility “attachers” elect not to underground with AmerenUE, then the poles will be reduced in height after AmerenUE removes its wires and equipment.



The pole “stubs” will then become the ownership and maintenance responsibility of the other utility, regardless of who owned the pole before. *A decision on another company's part not to participate will not affect AmerenUE's decision to proceed with undergrounding its own lines and equipment — the electric reliability benefit will be there either way.*

Overhead Service Wires to Homes and Buildings

The photograph below shows a set of overhead service wires going from a pole to a house. AmerenUE's spans of wire from pole to pole will always be removed in an undergrounding conversion project. However AmerenUE cannot elect “on its own” to do the same with the service wires connected to individual houses and buildings because there are private costs to the customer involved

